



T-PRINT TEMPERATURE RECORDER WITH BUILT-IN PRINTER

New !

USE:

- print-out of temperature record during transport of food, pharmaceuticals, flowers, live animals and other goods
- designed especially for installation in driver's cabin

FEATURES:

- record from one or two temperature probes
- graphical and numerical print-out of temperature
- print from the last record to the history till button is pressed
- print up to set hour in current day
- print of set number of hours to the history
- fast print to usual 57mm thermo paper in 10m rolls
- 3400 record lines/one paper roll, 5 years print-out archivability
- large graphic illuminated display
- indication of temperature exceeding by LED and acoustically
- record of actual or average values at logging interval
- cyclic record - after filling the memory oldest records are overwritten by new
- no need to download data - large 1MB memory stores up to 5 years of record permanently in memory
- USB interface for record download to the PC
- free PC software
- easy installation by means of self adhesive Dual Lock
- included traceable calibration certificate
- conforms to EN 12830, Class 1 and EN 13486, Class 1 for the transport of food
- fifteen selectable languages - e.g. English, German, French, Italian, Polish, Dutch, Spanish, Portuguese, Romanian, Czech
- degrees of Celsius and Fahrenheit



TECHNICAL PARAMETERS

Measuring temperature range:	-90 to +260 °C
Operating temperature range:	-30 to +65 °C
Operating temperature range of the printer:	-20 to +50 °C
Compatible temperature probes:	with Pt1000 sensor with maximum cable length 10 meters
Accuracy of the input without probe:	±0.2 °C
Resolution:	0.1 °C
Connector for temperature probes:	Cinch
Logging interval:	user selectable from 1 minute to 60 minutes
Memory capacity:	1MB - 172 032 records from one probe, 102 400 records from two probes (up to 5 years with 15 minutes interval and one probe)
Power:	9 to 32Vdc, protected against alternator load shedding+internal Lithium battery
Consumption while printing:	approximately 8 W
Consumption - not printing:	approximately 0,05 W
Dimensions without connectors, weight:	175 x 124 x 51 mm (w x h x d), weight 370 grams
Protection:	IP20

Included in delivery:

Included is **traceable calibration certificate** from the manufacturer. Calibration certificate with declared metrological traceability of etalons is based on requirements of EN ISO/IEC 17025 standard.

Included is also roll of paper with 5 years print-out archivability, USB cable for communication with the PC, power supply cable 5m, battery for internal clock, self adhesive Dual Lock for easy installation.

Anytime it is possible to download free basic program for Windows. Program enables to control all logger functions and viewing and printing of record in numerical and simple graphic format. It is possible to export recorded temperature values to dbf or txt formats for further analysis.

It is necessary to order temperature probes

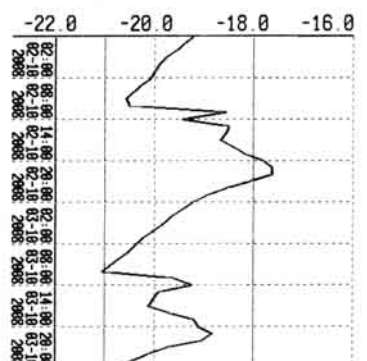
- see below.



YOUR COMPANY		
T-PRINT 00221	FW:00 13	
Ser Num : 07970003		
Location: VEHICLE BN CC230		
Printed : 04.03.2008 6:41		
Ch1:FROZEN SECTION		
Lower AlarmLimit	-25.0	
Upper AlarmLimit	-22.0	
Ch2:CHILLED SECTION		
Lower AlarmLimit	1.0	
Upper AlarmLimit	8.0	

03.03.2008	Ch1	Ch2
15:00:00	-19.7	6.8 °C
15:05:00	-21.1	4.8 °C
15:10:00	-21.7	4.0 °C
15:15:00	-22.0	3.6 °C
15:20:00	-22.3	3.0 °C

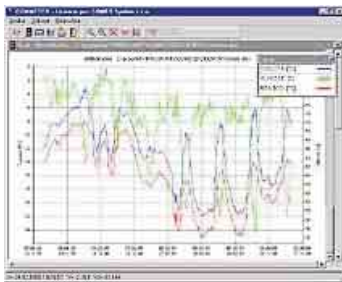






> YOUR COMPANY <	
T-PRINT 00221	FW:01 20
Ser Num : 08970012	
Location: VEHICLE BN CC230	
Printed : 06.10.2008 10:57	
Ch1:Frozen section [°C]	
Lower AlarmLimit	-21.0 (—)
Upper AlarmLimit	-18.0 (—)





T-PRINT TEMPERATURE RECORDER WITH BUILT-IN PRINTER

Optional accessory:

	SWR004	optional software for Windows - color printing, vertical and horizontal zooming of graphs and other functions.
	SW100	CD with free PC program
	Pt1000 probes	temperature probes with Pt1000 sensors equipped with male Cinch connectors - there is a symbol /C behind probe name. Recommended is universal hermetic probe Pt1000TGL40/C with PVC cable 1, 2, 5 or 10 meters - see further.
	PRO33	spare roll of thermo paper - width 57mm, length 10m, 5 years archivability
	LP007	universal metal wall holders for recorder wall mounting. Package contains a pair of holders and 4 screws.
	K2210	spare male connector Cinch for connecting the temperature probe
	A1941	acdc adapter 230V-50Hz/24Vdc/24W for power outside of the vehicle
	K2210	spare Lithium battery CR2032 3V